

Interia

Creating Work[ing] Spaces



Cubiloc

Lockers

2 - 4 Week Lead Time

Cubiloc

The Cubiloc Hanging Locker Range is designed for the ultimate in change room security and user experience. These lockers are designed to meet the user's requirements with each compartment having a rail for hanging clothing and sufficient storage room for footwear and other personal items.

Features

- Fully Customisable
- Featured Below: Wave Door, 4 Door, 2 Door and 2 Door with Shoe Box & Bench Seat
- Full width Hanging Rail
- Grill installed in back to ventilate locker space
- Concealed cup hinges
- Can be configured to facilitate any locking system specified
- Lock options: Key, Rotor Hasp, Code Lock, RFID Lock
- Numbers / Graphics: Vinyl sticker, Engraved Traffolyte
- 10 Year Warranty

Variations

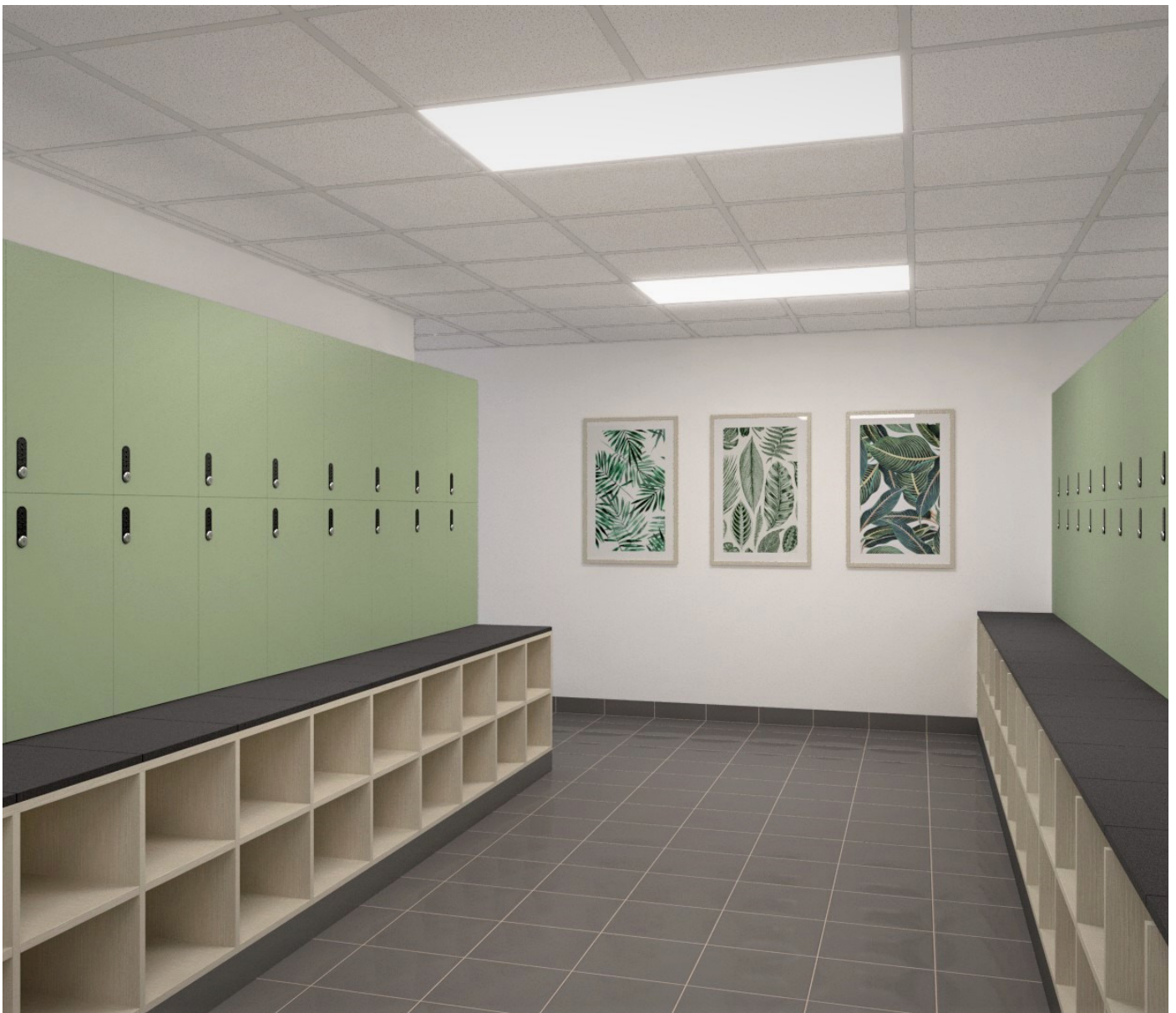


Customisable Options

- Dimensions
- Materials
- Edgebanding colour
- Internal configuration (Shelves, Rails, Hooks, etc)
- Door Panels (Grooves, Perforations, etc)
- Bulkheads (Flush, Sloping, etc)
- End Panels
- Locks
- Numbering & Graphics
- Accessories
 - Charging Ports (USB)
 - Lighting
 - Safes
 - Anti-Theft Hangers
 - Enquire for more

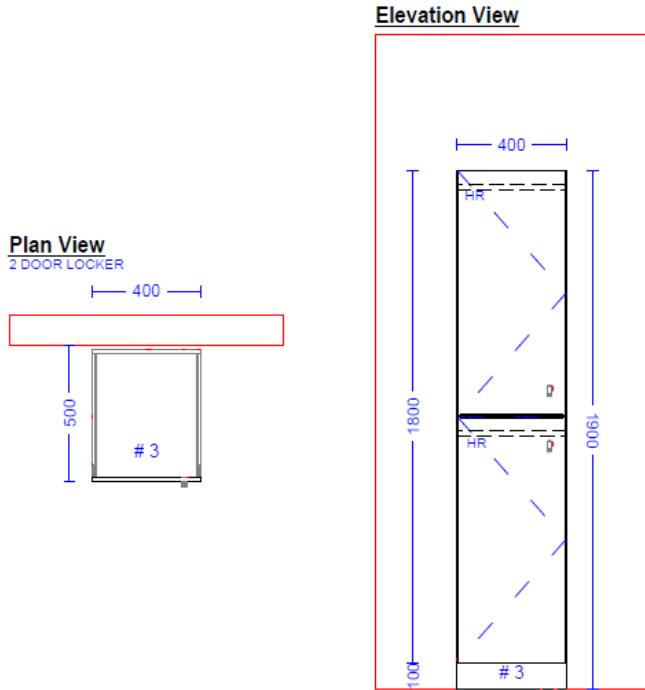
Board Options

- Carcase:
 - 16mm White
 - Black HMR Particleboard with ABS edge.
- Doors:
 - 13mm Compact Laminate
 - (Laminex or Polytec)
 - 18mm Particleboard
 - (Laminex or Polytec with ABS edge)
- Seat:
 - 13mm Compact Laminate
 - (Laminex or Polytec)
 - Polished Timber Slats
 - (Tasmanian Oak, Spotted Gum)

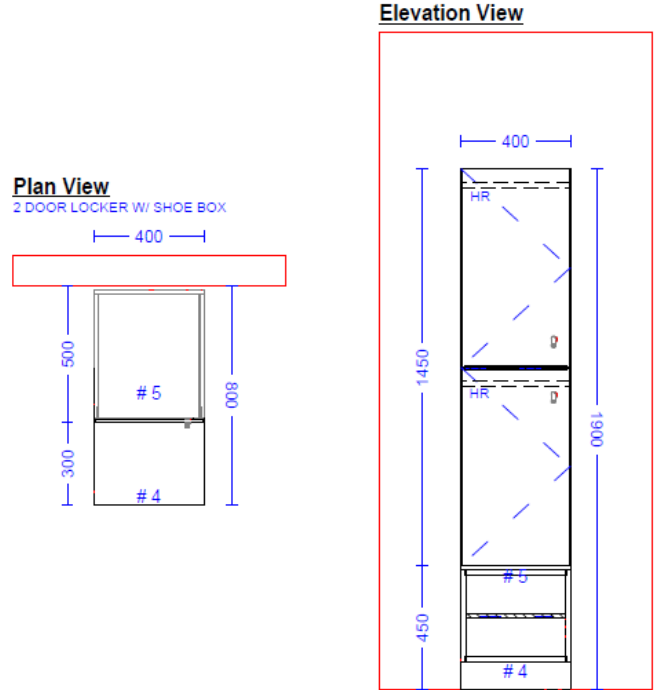


Specifications

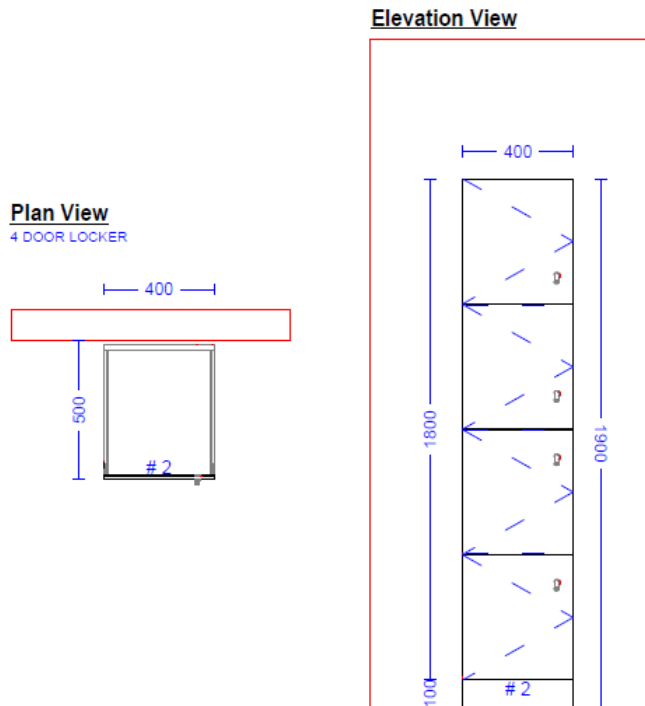
2 Door:



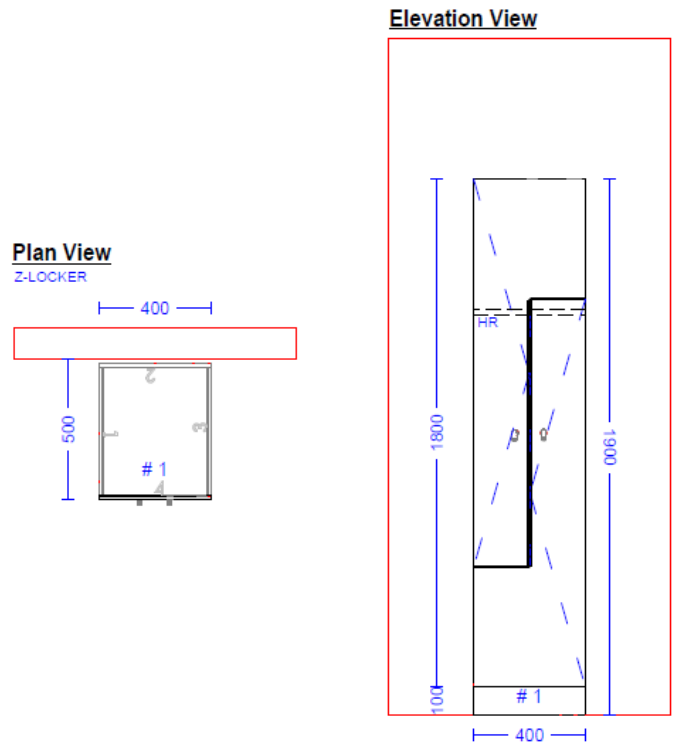
2 Door with Shoe Box:



4 Door:



Wave 2 Door:





CONTACT

1300 784 814
sales@interia.com.au

Showroom
Old Cloisters Building
200 St. Georges Terrace,
Perth WA 6000

Head Office
21 - 25 Chisholm Crescent,
Kewdale WA 6105

Connect with us
on social media!