

Interia

Creating Work[ing] Spaces



Go Steel

Lockers

2 - 4 Week Lead Time

Go Steel

Lockers are designed to securely store personal items of varying sizes. Each locker can function as a stand-alone unit or can be banked together as a bay of units. Lockers are available in various heights, widths, and configurations.

Features

- Available in 305mm wide and 380mm wide units
- Flush-mounted doors with 180-degree opening capability
- Hanging rail included in 1 and 2 door lockers
- Cardholder provision on each locker door for easy identification
- All locker doors fitted with ventilation holes
- Key lock and pad latch as standard
- Optional locking systems available
- Quality powder coated finish
- Silver/Grey Colour as Standard

Accessories

- Sloping top
- Locker bench
- Locker Stand
- Locker Numbering
- Corner Infill
- Plinths

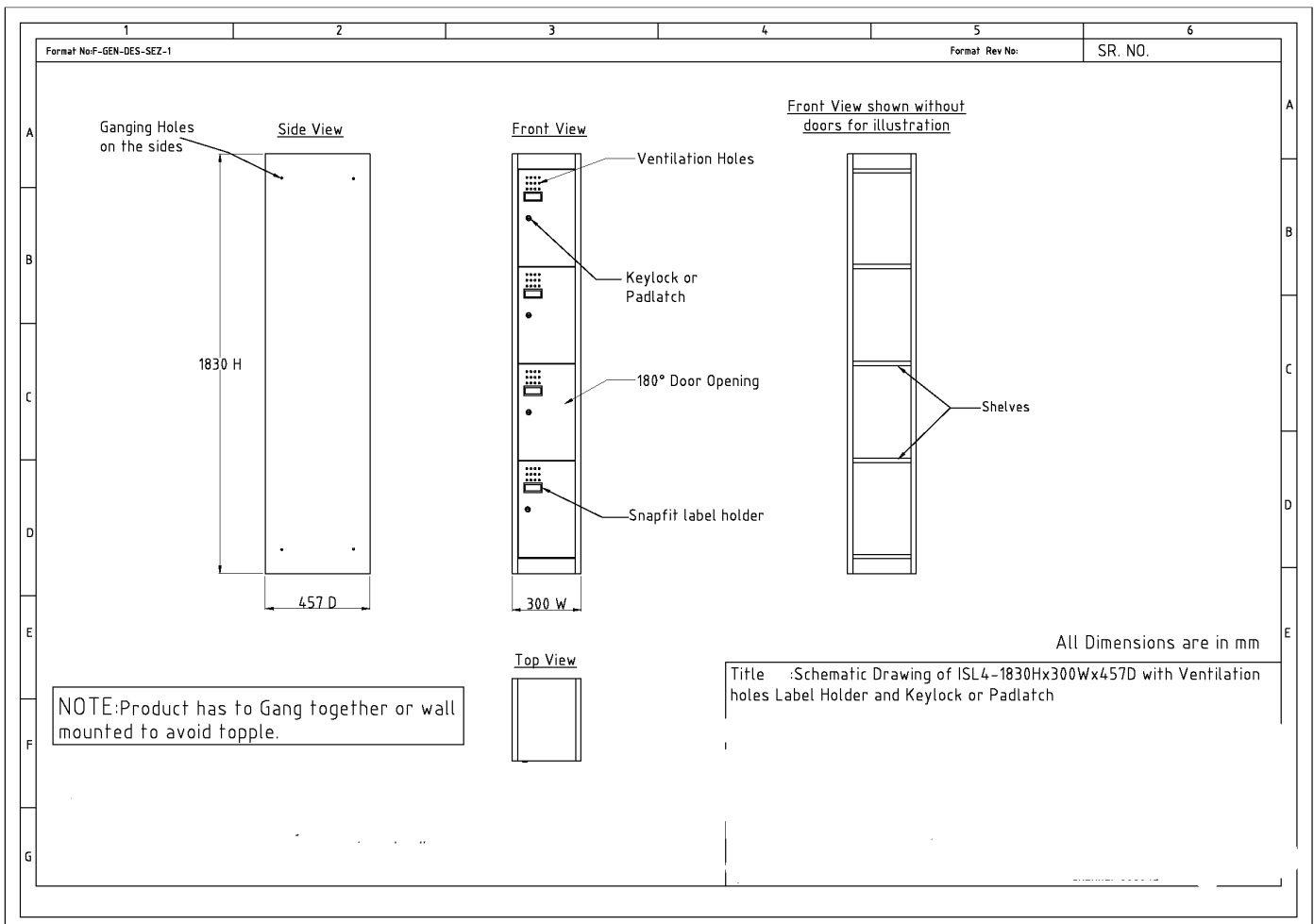
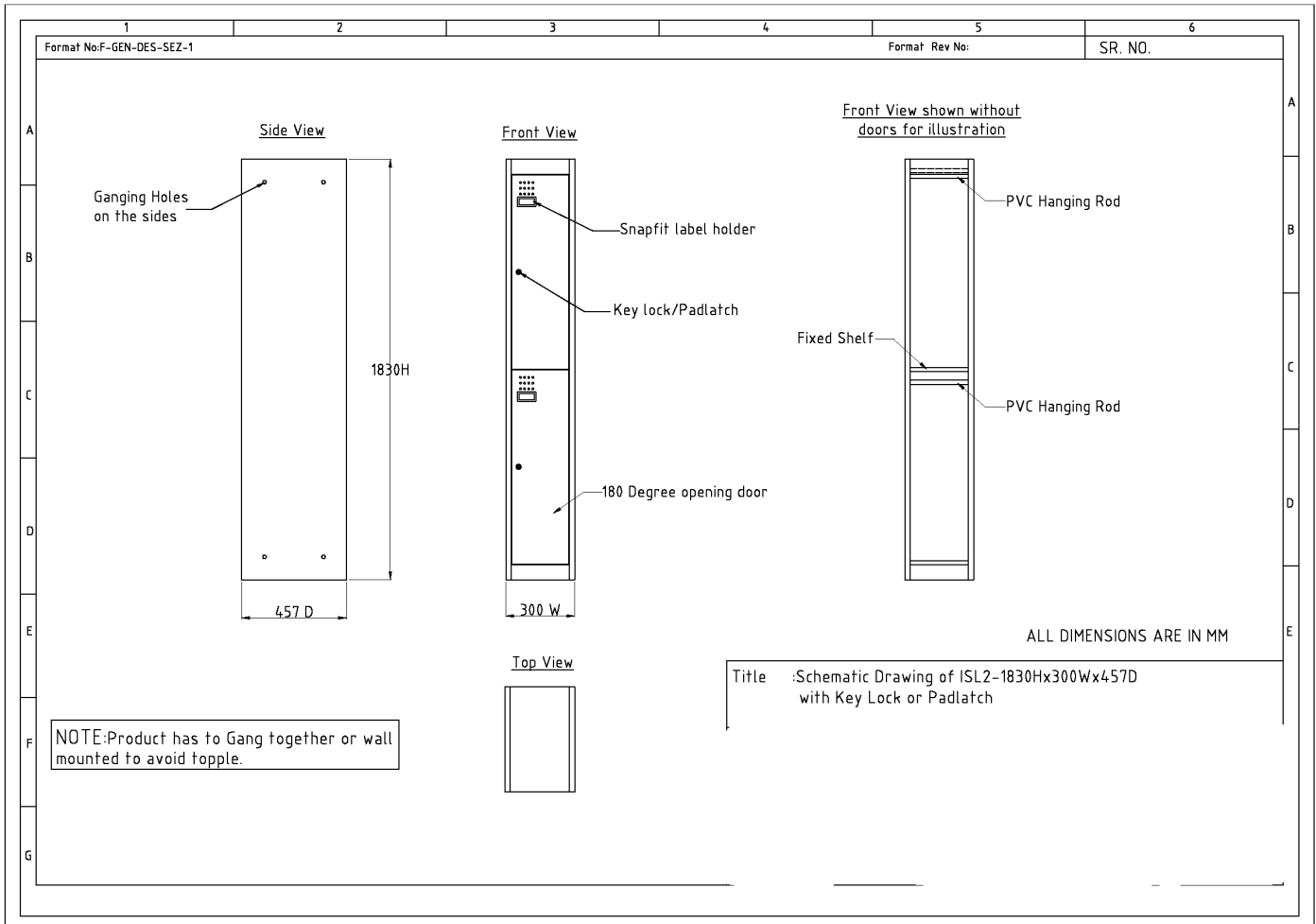
Variations



Specifications

- 1830H x 380W x 460D
 - 1 Door Locker
 - 2 Door Locker
 - Combo Locker
 - 3 Door Locker
 - 4 Door Locker
 - 6 Door Locker
 - 8 Door Locker
 - 12 Door Locker
- 1830H x 305W x 460D
 - 1 Door Locker
 - 2 Door Locker
 - 3 Door Locker
 - 4 Door Locker
 - 6 Door Locker







CONTACT

1300 784 814
sales@interia.com.au

Showroom
Old Cloisters Building
200 St. Georges Terrace,
Perth WA 6000

Head Office
21 - 25 Chisholm Crescent,
Kewdale WA 6105

Connect with us
on social media!