

# Interia

Creating Work[ing] Spaces



## Lynx

Lockers

2 - 4 Week Lead Time

# Lynx

Lockers are designed to securely store personal items of varying sizes. Each locker can function as a stand-alone unit or can be banked together as a bay of units. Lockers are available in various heights, widths, and configurations.

## Features

- Available in 305mm wide and 380mm wide units
- Flush-mounted doors with 180-degree opening capability
- Hanging rail included in 1 and 2 door lockers
- Cardholder provision on each locker door for easy identification
- All locker doors fitted with ventilation holes
- Key lock and pad latch as standard
- Optional locking systems available
- Quality powder coated finish
- Silver/Grey Colour as Standard

## Accessories

- Sloping top
- Locker bench
- Locker Stand
- Locker Numbering
- Corner Infill
- Plinths

## Variations

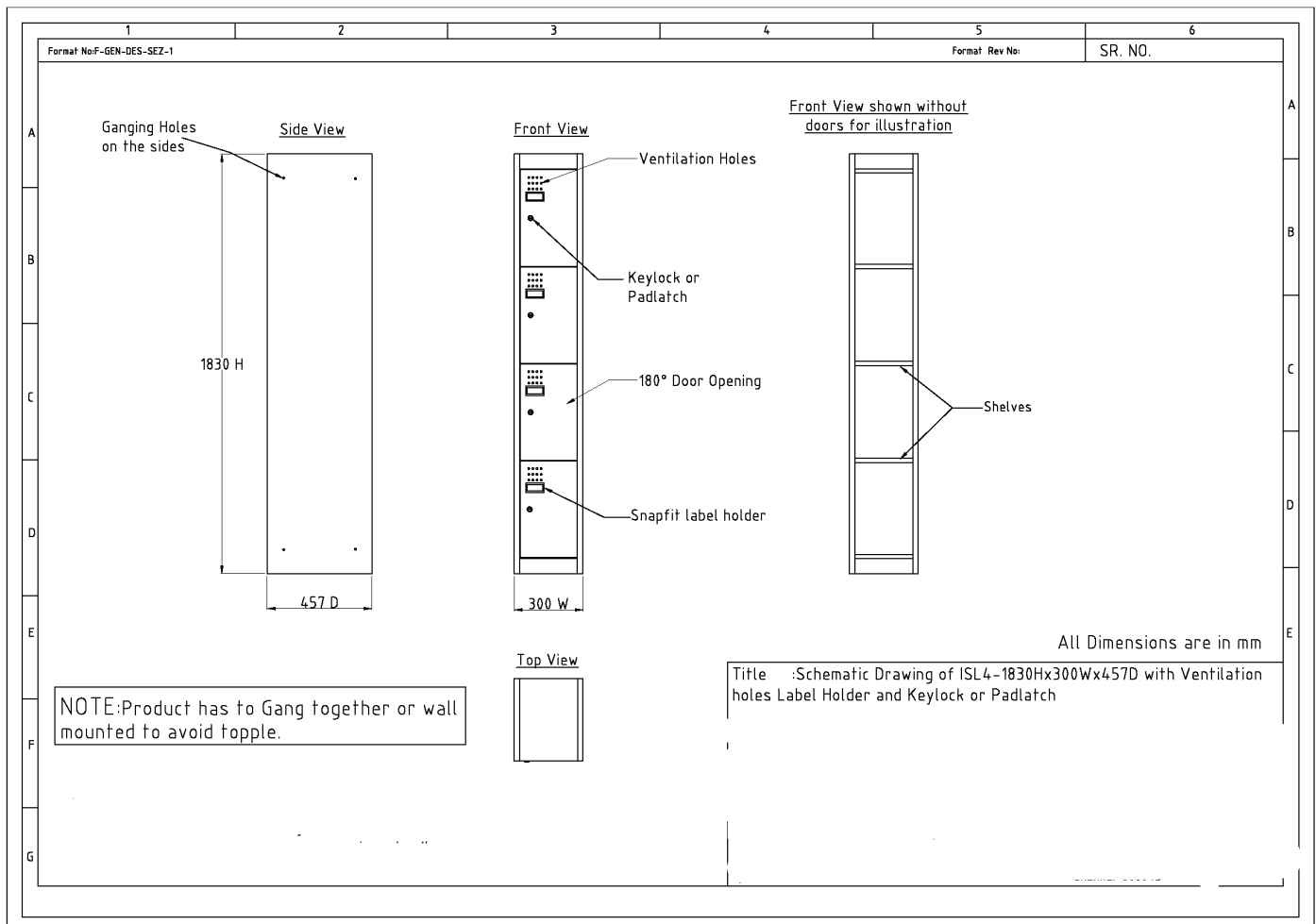
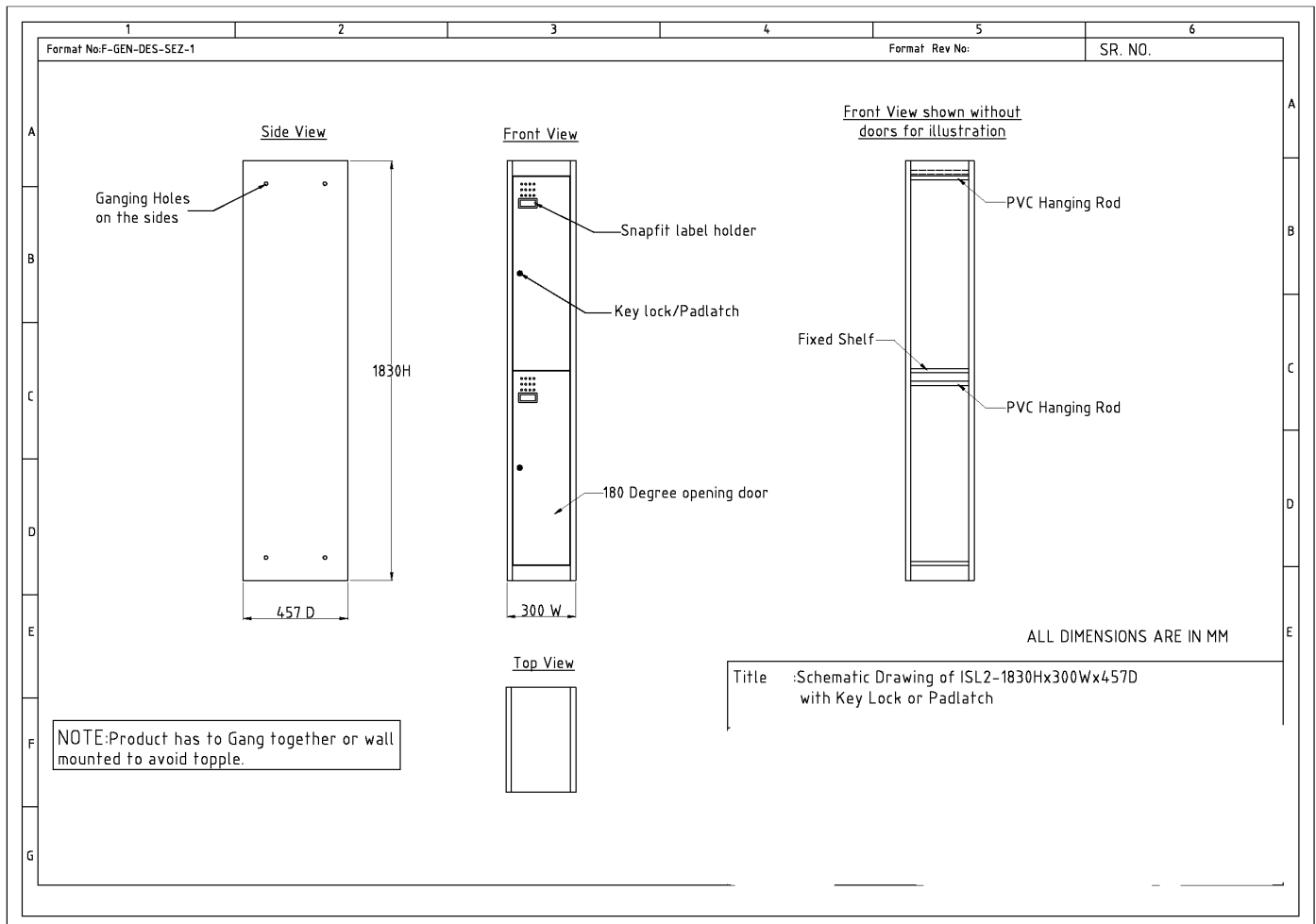




## Specifications

- 1830H x 380W x 460D
  - 1 Door Locker
  - 2 Door Locker
  - Combo Locker
  - 3 Door Locker
  - 4 Door Locker
  - 6 Door Locker
  - 8 Door Locker
  - 12 Door Locker
- 1830H x 305W x 460D
  - 1 Door Locker
  - 2 Door Locker
  - 3 Door Locker
  - 4 Door Locker
  - 6 Door Locker







## CONTACT

1300 784 814  
[sales@interia.com.au](mailto:sales@interia.com.au)

Showroom  
Old Cloisters Building  
200 St. Georges Terrace,  
Perth WA 6000

Head Office  
21 – 25 Chisholm Crescent,  
Kewdale WA 6105

Connect with us  
on social media!